

# Install TimeForge with Dinerware Point of Sale

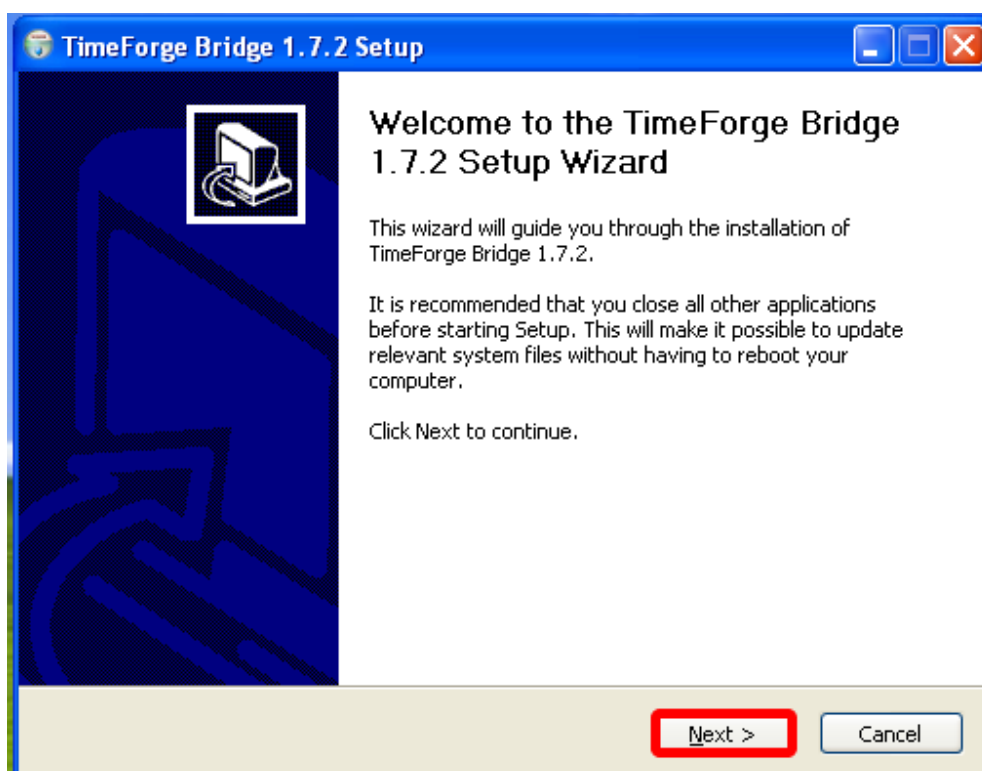
TimeForge is capable of integrating with several Point of Sale systems, including Dinerware. Dinerware is a wonderful Point of Sale system, with dealers all over the world.

This integration will ensure you get the most out of Dinerware and scheduling; the process involves installing the TimeForge Dinerware Bridge software on the main computer system. Need a copy of the software? No problem. Just contact our [support team](#).

The software will read and write to your Dinerware system as necessary and can enforce your TimeForge [schedules](#) - preventing employees from riding the clock. Additionally, you can use the TimeForge [biometric TimeClock](#) or Fingerprint scanner with Dinerware to allow biometric clock-ins and clock-outs.

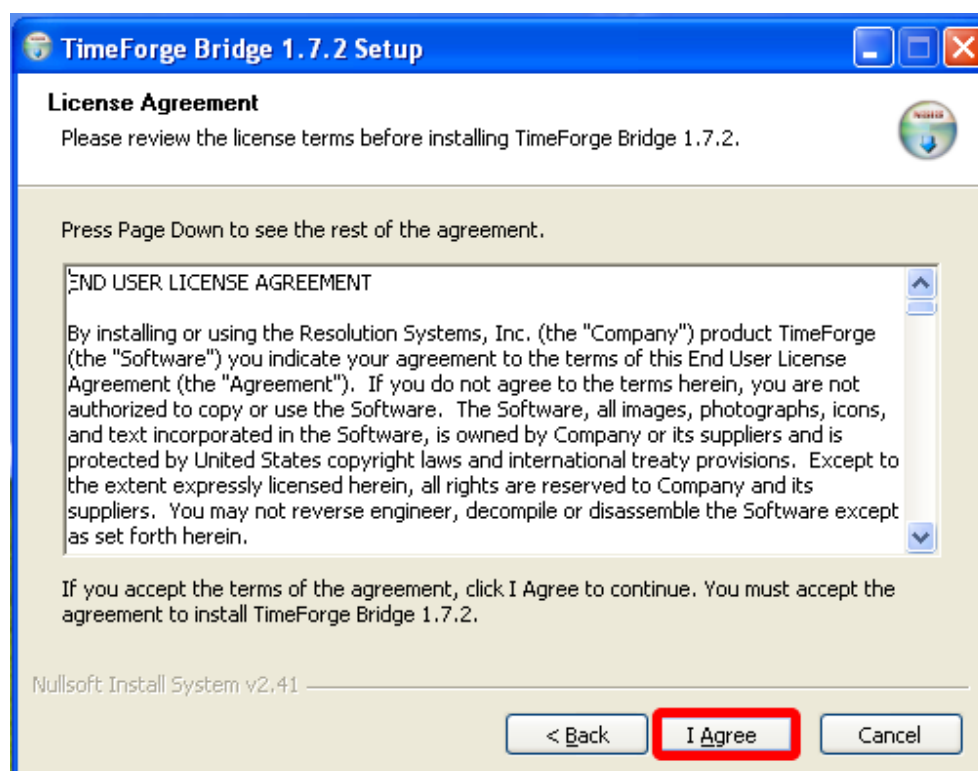
## Install the TimeForge Dinerware Bridge software

Begin installing the TimeForge Dinerware Bridge software.



## Accept the License Agreement

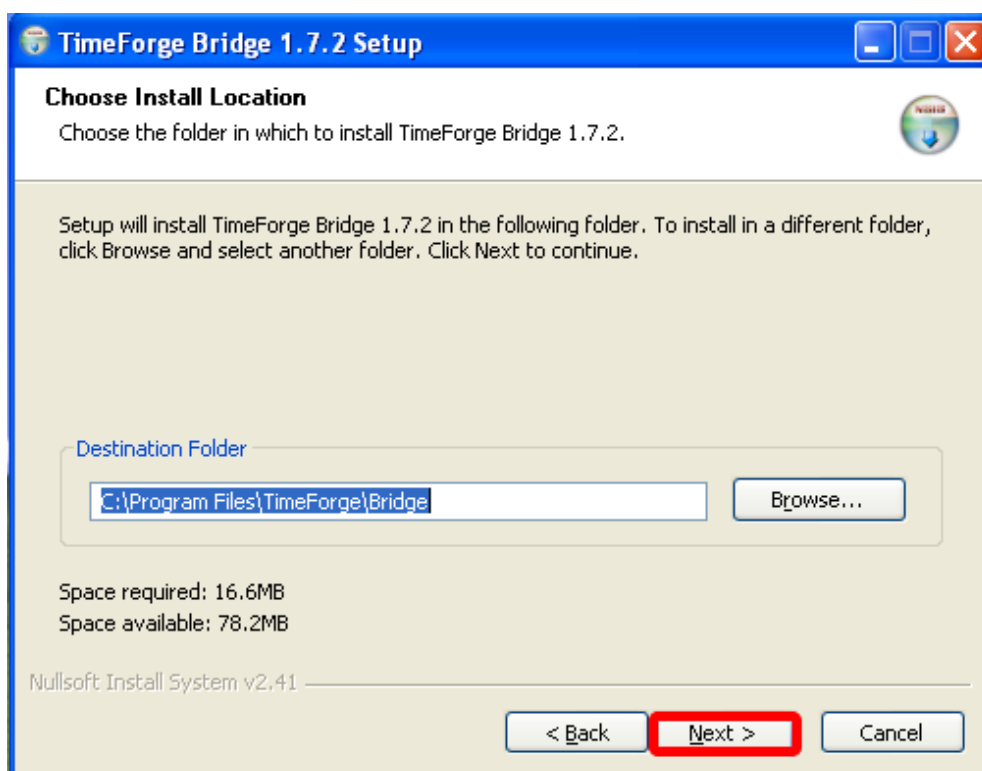
If you agree to the terms, accept the terms by clicking "I Agree."



## Choose a destination to install the software

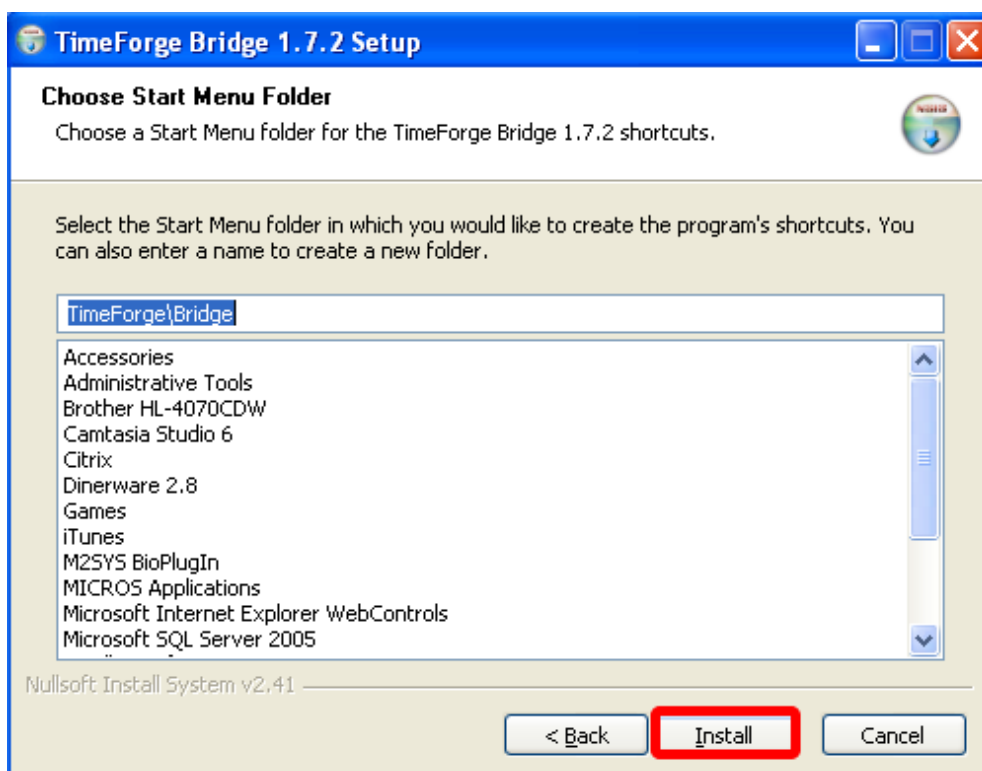
Choose a folder that will be the destination to install the TimeForge Dinerware Bridge. The default is usually correct.

Then, click "Next."



## Pick a Start Menu Folder

Choose the Start Menu Folder to install the software. The default is usually correct, but you can also create a new folder or select another folder.



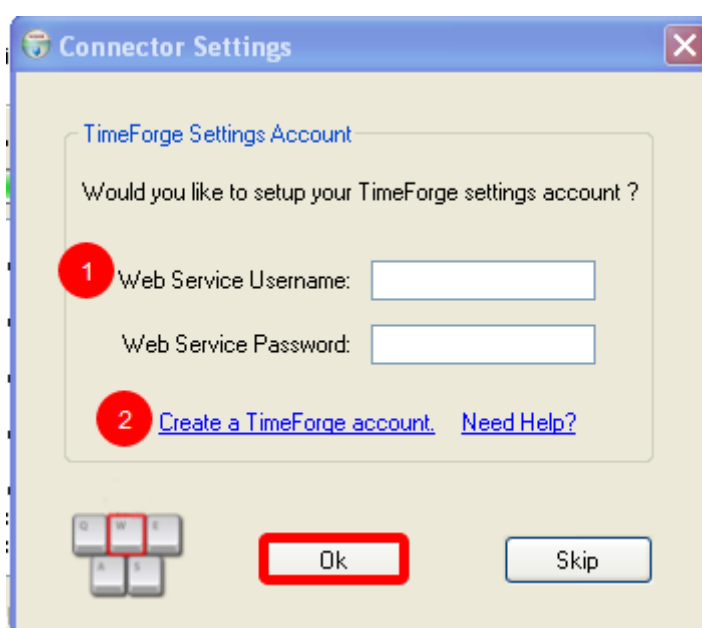
## Enter your Web Service Username and Password

1. If you already have a TimeForge account, enter your Web Service Username and Password to connect with TimeForge.

A web service username and password is **not** the same as your TimeForge username (usually your email address), but is a secured username and password that allows the Dinerware TimeForge Bridge to communicate with TimeForge.

You can [create a Web Service account](#) by logging into your account and going to the Settings for your location / store. You can then set your web service username and password.

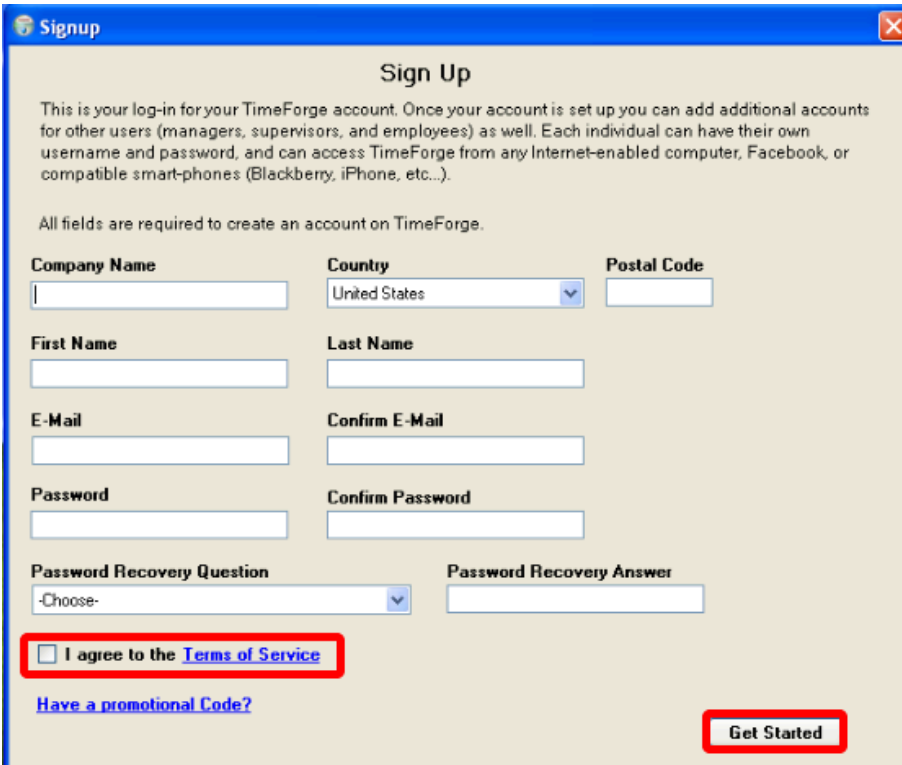
2. Click the link if you do not yet have a TimeForge account. We will create a Web Service Username and Password for you automatically.



## Create a TimeForge account

If you need to create a TimeForge account, please fill out all of the fields, including your company name, first and last name, email address, password, and a password recovery answer.

Select the check box if you agree to the Terms of Service, then click "Get Started". We will then automatically create your Web Service Username and Password for you.

A screenshot of a web browser window titled "Signup". The window has a blue title bar with a close button in the top right corner. The main content area has a light beige background. At the top, the text "Sign Up" is centered. Below it, a paragraph explains that this is the log-in for a TimeForge account and that additional accounts can be added for other users. A note states that all fields are required. The form consists of several input fields: "Company Name", "Country" (a dropdown menu showing "United States"), "Postal Code", "First Name", "Last Name", "E-Mail", "Confirm E-Mail", "Password", "Confirm Password", "Password Recovery Question" (a dropdown menu showing "-Choose-"), and "Password Recovery Answer". At the bottom left, there is a checkbox labeled "I agree to the [Terms of Service](#)". Below this is a link "Have a promotional Code?". At the bottom right, there is a "Get Started" button. The "Terms of Service" link and the "Get Started" button are highlighted with red rectangles.

**Signup**

**Sign Up**

This is your log-in for your TimeForge account. Once your account is set up you can add additional accounts for other users (managers, supervisors, and employees) as well. Each individual can have their own username and password, and can access TimeForge from any Internet-enabled computer, Facebook, or compatible smart-phones (Blackberry, iPhone, etc...).

All fields are required to create an account on TimeForge.

**Company Name** **Country** **Postal Code**

**First Name** **Last Name**

**E-Mail** **Confirm E-Mail**

**Password** **Confirm Password**

**Password Recovery Question** **Password Recovery Answer**

☐ I agree to the [Terms of Service](#)

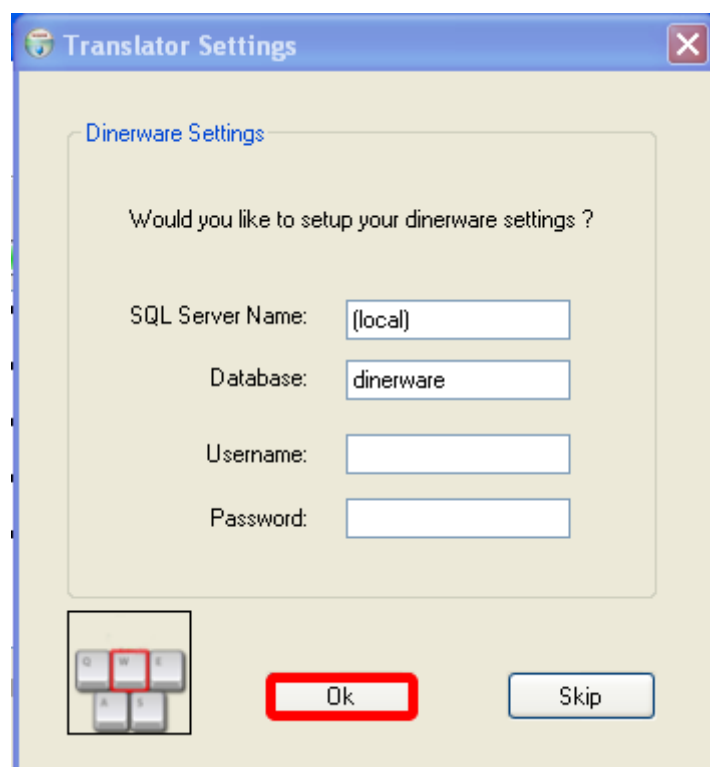
[Have a promotional Code?](#)

**Get Started**

## Configure the Dinerware connection settings

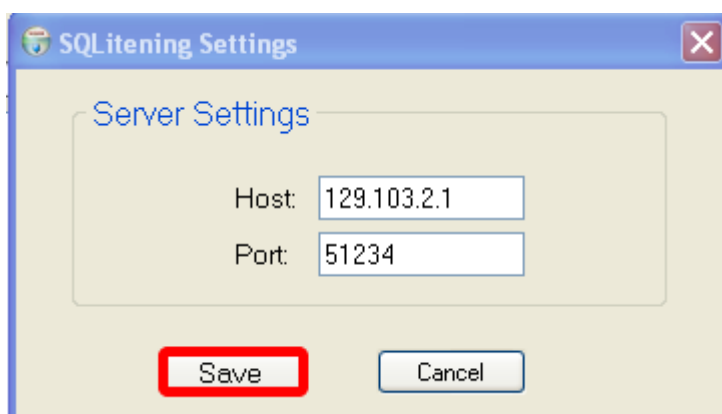
Set up the Dinerware database connection settings. Most likely, the default settings will work with your Dinerware installation.

If you don't know your SQL name and database, this information can be found on the Dinerware brain. Click "Ok" to continue.



## Save the SQLitening settings

The "Host" and "Port" information will automatically be correct. There is no need to alter any settings. Simply click "Save" and continue.



## All Done!

At this point, you can run the TimeForge Bridge software.

